



Towed Battery Charger



USER GUIDE

Thank you for purchasing the Towed Battery Charger +!

INSIDE THE BOX

Contents Include:

- a) Towed Battery Charger + (TBC+)
- b) 5 Wire Ties
- c) 4 mounting screws

Failure to connect the TBC+ according to the instructions may result in damage to your charge circuit or other electronics, in which RVi is not responsible.

Please contact our customer service department at **(800) 815-2159** if you have any questions regarding the installation of the TBC+.

Before continuing we recommend watching our videos at rvivideo.com



INSTALLATION:	pg. 2
TROUBLESHOOTING:	pg. 4
PAIRING STEPS:	pg. 5

INSTALLATION

1) Mounting the TBC+: Find a location near the towed vehicle's battery to mount the box. This location should allow you to easily route the duplex wire to the vehicle battery terminals. Use provided wire ties or screws to mount the box in place. You can mount the box along the inner fender with the screws or on a wire loom with the wire ties.



2) Connecting to the towed battery: In your towed vehicle, remove the nut on the positive battery terminal, place the **RED** ring terminal over the bolt, and then retighten the nut back onto the bolt. Remove the nut on the negative battery terminal, place the **BLUE** ring terminal over the bolt, and retighten the nut back on to the bolt.

NOTE: *If there is no RV power going into the TBC+ for an hour or more, the LED will stop flashing.*

TOWED BATTERY LED STATES:

FLASHING BLUE:
Above 12 volts

FLASHING YELLOW:
Between 11-12 volts

FLASHING RED: Below 11 volts
SOLID RED: Error

2

Connecting TBC+ to towed umbilical connector:

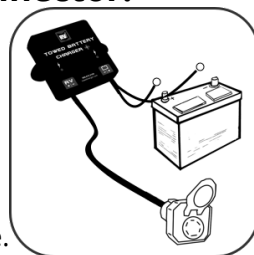
3) Locate the multi-pin connector near the front of your vehicle. Route the TBC+ duplex wire labeled "RV" safely through the engine compartment, or fender, to the front of the vehicle where this connector is located.

4) Identify the positive 12VDC terminal in the multi-pin connector where the wires come into the towed vehicle.

Strip the end of the ribbed wire from the TBC+ and insert the wire into the multi-pin connector. Securely tighten. You will need to ensure there is a constant 12VDC supply to this connector routed from your motorhome through your umbilical cord.

5) Identify the ground terminal in the multi-pin connector where the wires come into the towed vehicle. Strip the end of the smooth wire from the TBC+ and insert the wire into the multi-pin connector. Securely tighten.

6) Inspect for any loose or dangling wire, and secure as necessary with the wire ties provided.



3

TROUBLESHOOTING

You will need to ensure that there is a constant 12V supply to the multi-pin connector on the bumper of your motorhome.

If there is a constant 12V supply greater than the voltage of the towed battery, the motorhome engine is running, and the umbilical is plugged into both the motorhome and the towed vehicle, the RV LED on the TBC+ will **flash**. If it is not **flashing**, check all terminal connections, the fuse, or the 12 Volt supply from your motorhome.

For vehicles with rear mounted batteries, consult your owner's manual to find the jump start lug and appropriate ground source for completing step 2.

RV LED STATES:

GREEN: Above 13 volts Flashing: Charging Solid: Not Charging & battery good	YELLOW: Between 12-13 volts Flashing: Charging Solid: Not Charging & battery good	RED: Below 12 volts, & battery low
--	--	---

4

***WARNING:** If you have to disconnect the towed vehicle's battery for towing, then it is recommended to disconnect the negative and positive terminal. Failure to do so can cause damage on the towed vehicle.*

PAIRING STEPS

NOTE: The following steps are for pairing to the Command Center tablet and hub. If you do not have the Command Center system, you can skip these steps.

TBC+ does **not** come paired with Command Center tablet and hub. The following steps will walk you through the one time pairing process.

NOTE: Pairing is not required for TBC+ to perform.

1) Power on the Command Center tablet and hub. To power the tablet, press and hold the power button for 3 seconds. To power the hub connect it to the provided USB charger or press the power button.



NOTE: See the Command Center User Guide for more info.

2) Make sure the LED on the TBC+ is flashing by plugging in the umbilical to the RV and towed and start the motorhome's engine. You can also start the engine of the towed and shut it back off.



5

3) On the tablet, click **Add Device** from the tablet **Dashboard**.



4) On the new screen, enable TBC+ by toggling the on/off slider to ON. At this time, the tablet will walk you through pairing.



5) You will be asked to pair to TBC+ by taking a picture of the **QR code** on the back of this User Guide.



QR code
(example)

Note: *Keep this User Guide in case of possible re-pairing in the future.*

Boom! You're a genius!

